



# BeeWrap<sup>+</sup>

Advanced mobile pallet wrapper



MOBILE WRAPPING ROBOT

100%  
MADE in ITALY

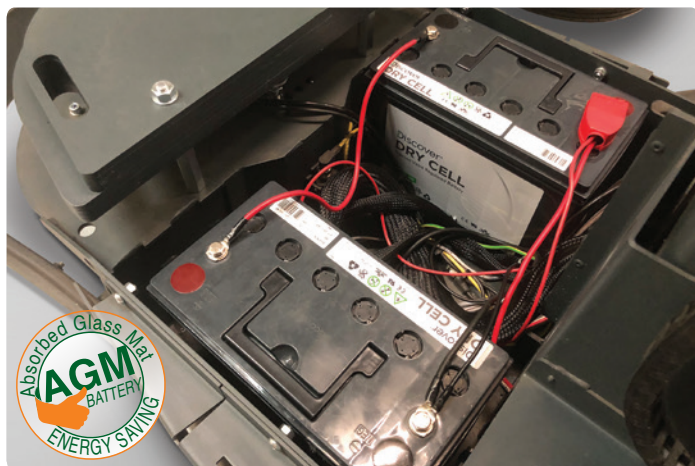
**BeeWrap+** is a mobile wrapping machine used for palletizing goods with stretch film. It is particularly **suitable for heavy weight items, unusual shapes, and loads with large dimensions**, ensuring the highest pallet security. It is equipped with a digital control panel that allows the user, in an easy and functional way, to alter various parameters and set-up customized wrapping cycle programs. The Beewrap+ is also equipped with the new AGM dry battery technology, providing higher performance and is maintenance-free.

This guarantees a higher working autonomy (up to 400 cycles per charge) and enhances safety within the machine!

Beewrap+ **is an excellent logistics solution** because **it is easy to move** and versatile for pallets of different shapes and sizes.

## FEATURES & BENEFITS

- » Safety First – thanks to the new AGM dry battery technology there is no danger related to battery maintenance and acid leaks
- » Easier to transport – thanks to the AGM technology, batteries are not subject to any transport restrictions
- » Extensive safety – BeeWrap incorporates several safety features as standard (such as bumper, light and beeper indicator)
- » No film waste – with motorized Pre-Stretch system & independent tension control
- » Increased production capacity – thanks to customized settings
- » Versatile use – perfect for any type of load even the most complex wide and/or round ones
- » Flexibility – machine is easily moved to various locations
- » Modular system – meeting your individual needs
- » Easy-to-use – due to the simple control panel
- » CE compliant – engineered and produced in Italy according to Europeans safety standards
- » Customizable – film carriage with brakes (mechanical or electromagnetic) or powered prestretch (240%)



## OPTIONS

- Photocell for black film or coloured products
- Remote control available with the 87 Ah battery option
- Film cutting system (on LP carriage only)
- Double tracing wheel
- Non-marking wheels
- Wheels for abrasive floor
- 87 Ah battery for 400 cycles\* and energy saving (power off after 10 minutes)
- Automatic stop and restart function with a scanner
- Blue signal light to highlight maneuver area/where machine operates for added safety

Customize your **BeeWrap** with the most suitable carriage for your loads!



M - Mechanical brake



FM - Electromagnetic brake



LP - Powered pre-stretch 240%  
(150%-200% - kit available as option)



Carriage for net/mesh





Operation indicator light and beeper for safer work condition.

Ergonomic, intuitive and easy to use control panel

New selector to restart the stand-by status

Emergency button

Flexibility: handle for manual moving

Adjustable height tracing wheel

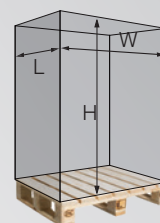
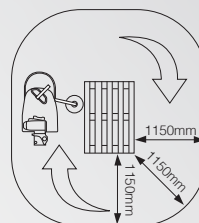
Different column heights available

Different carriages available

## Technical features

Nr. of pallets for single battery charge	250* with 58 Ah batteries and 400 with 87 Ah batteries
Rotation speed (m/min.)	50min. / 80max
Up & Down carriage speed (m/min.)	1min. / 5max
Power supply (V)	100Vac ÷ 240Vac
Installed power (kW)	0,35 Kw
AGM Batteries	2x 2V 58 Ah (C5) standard 2x 2V 87 Ah (C5) as optional

Min/Max loading sizes	Min.	Max
L (mm)	500	***
W (mm)	400	***
H (mm)	600	2100 2600
Weight (Kg)	45**	∞



\* Test conditions:  
Standard Column 2100mm  
AGM acid batteries  
Pallet dimensions mm 800 x 1200 x 1500 (h),  
up & down cycle, up & down cycle, and a total cycle time of 71 seconds.

\*\* With film tension of 6daN applied.

\*\*\* Bulky load can be wrapped up to a total perimeter of 26 mt in standard configuration.

## Machine installed

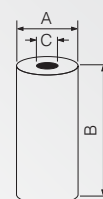
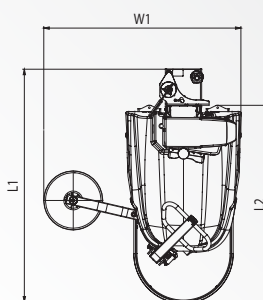
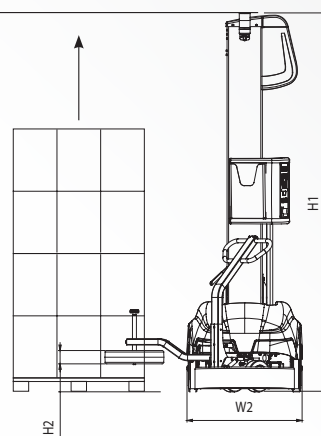
H1	2410/2910 mm	2410/2910 mm
H2	65 mm	65 mm
W1	1255 mm	1255 mm
W2	733 mm	733 mm
L1	1482 mm	1547 mm
L2	1262 mm	1262 mm

## Folded machine

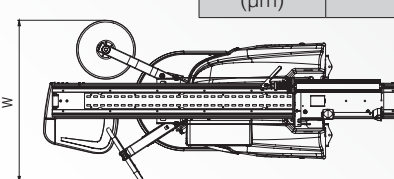
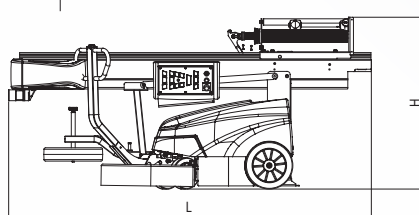


229(L)x98(w)x130(H)cm

	M/FM Carriages	LP Carriage
W	1027 mm	1029 mm
H	1094 mm	1147 mm
	2100/2600 column	
L	2310/2810 mm	2310/2810 mm
Weight	316/355 kg	335/380 kg



Film roll dimensions	mm
A	250
B	500
C	76
Thickness (µm)	17/23



As a part of our policy of continuous improvement, we reserve the right to alter design and specifications without prior notice. This brochure is for descriptive purpose only. Some of the items pictured in this brochure are optional and not standard equipment.



## The SIAT Group



Headquartered in Northern Italy, SIAT is established as a quality leader in end-of-line industrial packaging solutions, specializing in taping, strapping and wrapping machines, as well as flexographic printing machines.

Based in Ohio (USA), Combi is a Northern American producer of industrial packaging systems, engineering and manufacturing case erectors, tray formers, case sealers, case packers, robotic packaging systems, and ergonomic monoblock hand-packing stations.



Located in Northern Italy, Tam has been producing small metal parts and providing precision machining services for over 30 years.

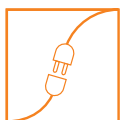
For over 50 years, we have been manufacturing high-tech equipment and are proud to be recognized by our customers as among the leading brands in packaging machinery and components. Our solutions are utilized across various industries, including food and beverage, e-commerce, logistics, packaging, and consumer products.

## Our machines are designed to:



### Increase customer productivity

Our machines boast an average life of 25 years, while our customers pay off their investment in only 4 to 5 months.



### Total lower cost of ownership

Our machines are designed for easy maintenance and simple installation. They are developed to be user-friendly and durable, while also being easy to integrate and manage.



### Reduce environmental impact

We strongly believe in pursuing this goal through our environmental approach, envisioning the future of packaging as a collaborative effort with our customers to find the most sustainable and secure solutions. Each machine is designed to consume less energy, minimize material usage, and reduce waste.



### Be connected

Thanks to Optirun, the SIAT Group's IoT solutions brand, we can calculate tape and box consumption, monitor film usage, and track all machine parameters to prevent downtime.



### E-commerce

Buy directly at [www.shop.siat.com](http://www.shop.siat.com)



### Service

Contact our field service Team at [servicenow@siat.com](mailto:servicenow@siat.com)



Via Puecher 22,  
22078 Turate - Como  
[www.siat.com](http://www.siat.com)

