



*Woodworking machinery at its best!*

## DUST & CHIP EXTRACTOR OWNERS MANUAL

MODEL: W796



Charnwood, Cedar Court, Walker Road,  
Hilltop Industrial Estate, Bardon Hill, Leicestershire, LE67 1TU

Tel. 01530 516 926  
email: [sales@charnwood.net](mailto:sales@charnwood.net) website: [www.charnwood.net](http://www.charnwood.net)

# GENERAL SAFETY RULES



**WARNING:** Do not attempt to operate the machine until you have read thoroughly and understood completely all instructions, rules, etc. contained in this manual. Failure to comply may result in accidents involving fire, electric shock, or serious personal injury. Keep this owner's manual and review frequently for continuous safe operation.

1. Know your machine. For your own safety, read the owner's manual carefully. Learn its application and limitations, as well as specific potential hazards pertinent to this machine.
2. Make sure all tools are properly earthed.
3. Keep guards in place and in working order. If a guard must be removed for maintenance or cleaning, make sure it is properly replaced before using the machine again.
4. Remove adjusting keys and spanners. Form a habit of checking to see that the keys and adjusting spanners are removed from the machine before switched it on.
5. Keep your work area clean. Cluttered areas and workbenches increase the chance of an accident.
6. Do not use in dangerous environments. Do not use power tools in damp or wet locations, or expose them to rain. Keep work areas well illuminated.
7. Keep children away. All visitors should be kept a safe distance from the work area.
8. Make workshop childproof. Use padlocks, master switches and remove starter keys.
9. Do not force the machine. It will do the job better and be safer at the rate for which it is designed.
10. Use the right tools. Do not force the machine or attachments to do a job for which they are not designed. Contact the manufacturer or distributor if there is any question about the machine's suitability for a particular task.
11. Wear proper apparel. Avoid loose clothing, gloves, ties, rings, bracelets, and jewellery which could get caught in moving parts. Non-slip footwear is recommended. Wear protective hair covering to contain long hair.
12. Always use safety glasses. Normal spectacles only have impact resistant lenses. They are not safety glasses.
13. Do not over-reach. Keep proper footing and balance at all times.
14. Maintain the machine in good condition. Keep the machine clean for best and safest performance. Follow instructions for lubrication and changing accessories.
15. Disconnect the machine from power source before servicing and when changing the blade.
16. Never leave the machine running unattended. Turn the power off. Do not leave the machine until it comes to a complete stop.
17. Do not use any power tools while under the effects of drugs, alcohol or medication.
18. Always wear a face or dust mask if operation creates a lot of dust and/or chips. Always operate the tool in a well ventilated area and provide for proper dust removal. Use a suitable dust extractor.

# ADDITIONAL RULES FOR DUST EXTRACTORS

1. Dust extractors are frequently moved around the workshop. Make sure that mains cables and extractor hoses are positioned in such a way that they do not present a trip hazard.
2. Do not pick up pieces of metal or chunks of wood.
3. Switch off and unplug the extractor before removing the collection bag and/or filter.
4. Do not allow the collection bag to become over full.
5. When necessary, wash, thoroughly rinse and completely dry the filter bag. Using a wet or damp filter bag will reduce its efficiency as it will quickly become clogged.
6. Dispose of waste in accordance with local regulations.
7. DO NOT use without the filter bag and collection bag in place.
8. Keep hair, loose clothing, fingers, and all parts of the body away from the end of the suction hose.

## W796 Specification

Motor (induction)	750w (1hp), 240v, 50hz, 2850rpm
Flowrate (cubic metres per hour)	1000m <sup>3</sup> /hour
Inlet Diameter	100mm
Bag capacity	70 Litres
Maximum continuous run time	8 hours
Sound Level	73.4 dB (A)
Dimensions (WxDxH)	780mm x 390mm x 1370mm
Weight (Gross / Net)	27kg / 24kg
Rating	Trade
Warranty	5 Years



Risk of Injury!  
Never reach into  
the running fan



Wear Eye  
Protection



Wear Ear  
Protection  
During Prolonged Use

## Rating Description

Trade: Suitable for daily use by professional woodworkers.

Continuously rated, high power and a heavy duty construction. Typically used by several different operators in a small or medium sized business. Will be used up to the machines maximum limit with some long work periods. Expected maximum use of 1000 hours annually.

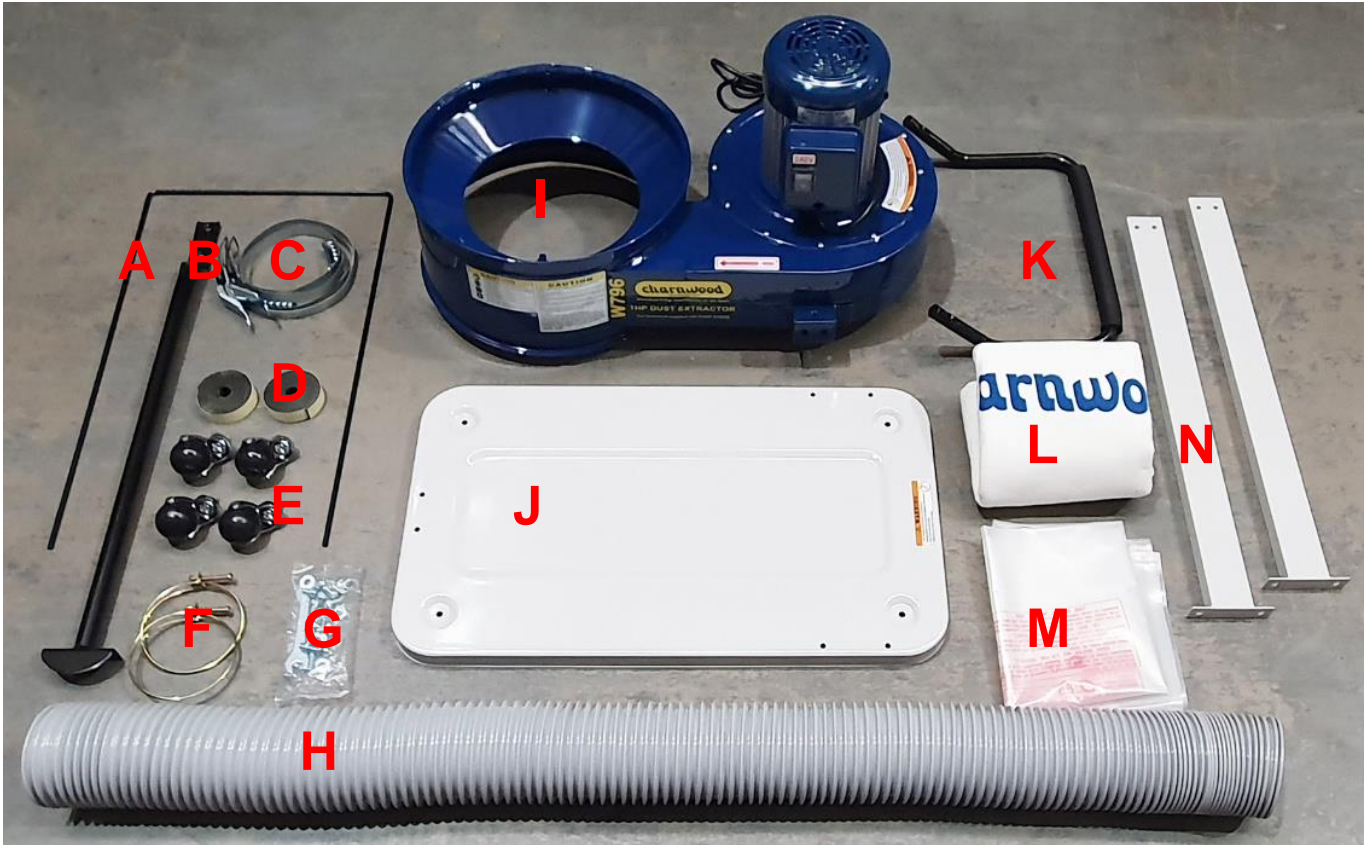
## Unpacking



Open the carton and carefully unpack all of the contents.

Note: The Base is packed underneath the polyfoam packing pieces

Completely empty the carton before confirming the components are all present.



**A** Filter Bag Support  
**B** Collector Support  
**C** Bag Strap  
**D** Foam Strip  
**E** Castors

**F** Hose Clamp  
**G** Fixings Pack  
**H** Hose  
**I** Collector Body  
**J** Base

**K** Handle  
**L** Filter Bag  
**M** Collection Bag  
**N** Support Leg

## Assembly



### Install the 4 Castors to the Base

Secure each castor with a washer and domed nut.

Tighten with a 12mm spanner.



### **Attach the 2 Support Legs to the Base**

Use 2 of the Hex head Screws To secure each leg.

Tighten with a 12mm spanner



### **Attach the Collector Support to the Base**

Use 2 of the Hex head Screws To secure the support.

Tighten with a 12mm spanner



Lift the Motor and Collector Body unit above the support legs and then lower it so that the brackets fit over the upper end of the Leg.



### **Secure the Collector Body to the Collector Support**

Use 2 Hex Head Screws.

Tighten with a 12mm spanner





### **Secure the Collector Body to the Support Legs**

Use 4 Hex Head Screws.

Tighten with a 12mm spanner



### **Fit the Filter Bag Support**

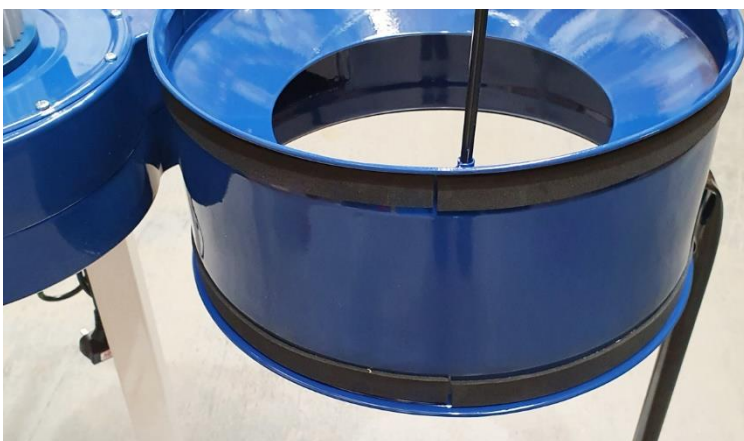
Push the Filter Bag Support into the 2 holes located in the rim of the collector drum.

Firmly press down until it is fully seated on both sides.



### **Fit the Handle**

Attach the Handle using 2 Cross Head Screws.



### **Fit 2 Foam Sealing Strips**

Take a roll of Self Adhesive Foam, peel off the backing paper and stick it to the outside upper rim of the Collector Body.

Use a pair of scissors to trim off any excess.

Repeat for the lower rim.

The foam helps to create an airtight seal for the bags.



### Fit the plastic Collection Bag

Open the bag and fit it over the outside of the Collector Body rim.

Tip: If you find this step tricky, use a couple of pieces of tape to secure the plastic bag in place whilst fitting the strap.

Fit the Bag Strap over the plastic bag, so it sits on the foam strip.

Engage the spring latch into one set of hooks and fasten it with the lever.

Ensure the plastic bag is sitting higher than the Bag Strap all around the rim.



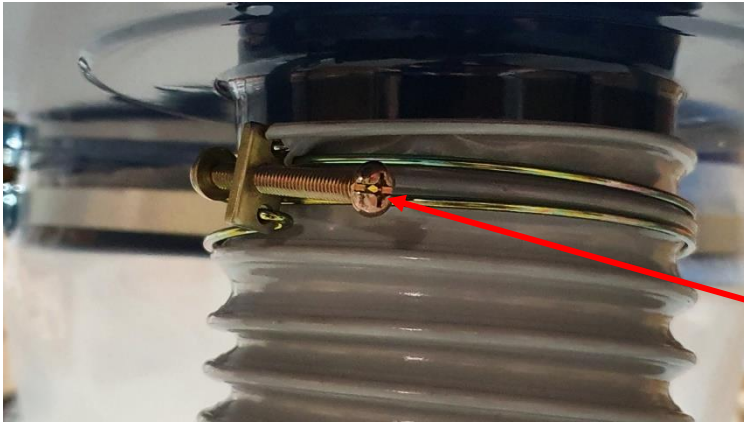
### Fit the Filter Bag

Locate the rectangle opening on the open end of the Filter Bag.

Feed the Bag Strap into the pocket all the way around the full circumference of the bag, until it can be seen in the opening again.



Engage the spring latch into one set of hooks and fasten it with the lever.



### Fit the Hose

Place a Hose Clamp over the outside of one end the Hose.

Push it onto the inlet, on the underside of the Collector Body.

Use a cross head screw driver to close the Hose Clamp until it is tight.

The second Hose Clamp can be used on the other end of the hose to secure it to a hose fitting or the dust hood of a machine.

The Extractor is now ready to use.

## Using the Extractor

Always start the extractor running before starting the dust producing machinery. Also allow the extractor to run for 10 seconds after the other machine is switched off to allow dust in the hose system to clear.

Empty the collection bag before it is overfull and dispose of the waste in accordance with the current requirements of your local authority.

Please Note: Maximum recommended total hose length in use at any time is 3 metres. Longer hose lengths may be used, but will reduce the performance.

When using the extractor with machines or power tools which have a smaller diameter connection, it is recommended to run the 100mm diameter hose from the extractor up to the machines dust outlet and fit the appropriate sized reducer at that point. This will maintain the airflow rate of the unit. For some applications it may be more convenient to use a smaller diameter hose. This will inevitably reduce the performance of the machine and the length of small diameter hose should be kept to a minimum.

## Optional Items



### 1 Micron Cartridge Filter Upgrade

The standard cloth filter, filters down to 2 microns.

This optional cartridge replaces the cloth bag and filters down to 1 micron without any loss in performance.



### Reducers

Used to connect the extractor to power tools or machinery with outlets smaller than 100mm diameter.



# Troubleshooting

<p>Reduced Performance</p>	<p>Check the collection bag is not full. Empty or replace the bag as required.</p> <p>Check the filter bag is not clogged. Turn the bag inside out and scrape the inside clean. The filter bag can also be washed, ensure it is completely dry before refitting.</p> <p>Examine the hose system looking for blockages. Remove the hose and clear out the blockage.</p> <p>Examine the hose and fittings for splits or air leaks. Secure the leaks and replace any worn hose.</p>
<p>Rattling noise and vibration</p>	<p>Large pieces may be blocked by the inlet grill. Remove the hose and Y-shaped connector from fan housing and check for pieces of wood or foreign bodies that are unable to pass through the grill. Remove them and reattach hose.</p>
<p>Extractor will not start</p>	<p>Check circuit breaker. Reset as required.</p> <p>Loose wire. Remove the On/Off switch, check the wires are pushed firmly onto the terminals.</p> <p>Failed switch. Replace the on/off switch.</p>
<p>Extractor does not run but buzzing noise heard from motor</p>	<p>Capacitor failure. (For confirmation, spin the motor shaft by hand. Press the start button whilst the shaft is still rotating. If the motors now runs normally, the start capacitor has failed.) Replace the start capacitor.</p>
<p>Extractor cuts out whilst running</p>	<p>Overheating. Leave the motor to cool and try again.</p>

# Declaration of Conformity for CE Marking

Charnwood Declare that Woodworking Dust Extractor, Model W796 & W796CF

Conforms with the following Directives: Machinery Directive 2006/42/EC  
Low Voltage Directive 2006/95/EC  
Conforms with the following UK Regulations: Supply of Machinery (Safety) Regulations 2008  
Electrical Equipment (Safety) Regulations 2016

And further conforms to the machinery example for which the EC type examination Certificate No. NM 11050062 and NL11050076 have been issued by TUV Nord Group, 30519 Hannover Germany.

I hereby declare that equipment named above has been tested and found to comply with the relevant sections of the above referenced specifications. The machinery complies with all essential requirements of the directive.

Signed: 

Dated: 03/10/2022

Location: Leicestershire

Richard Cook, Director



Please dispose of packaging for the product in a responsible manner. It is suitable for recycling. Help to protect the environment, take the packaging to the local amenity tip and place into the appropriate recycling bin.



Only for EU countries

Do not dispose of electric tools together with household waste material!

In observance of European Directive 2002/96/EC on waste electrical and electronic equipment (EEE) and its implementation in accordance with national law, electric tools that have reached the end of their life must be collected separately and returned to an

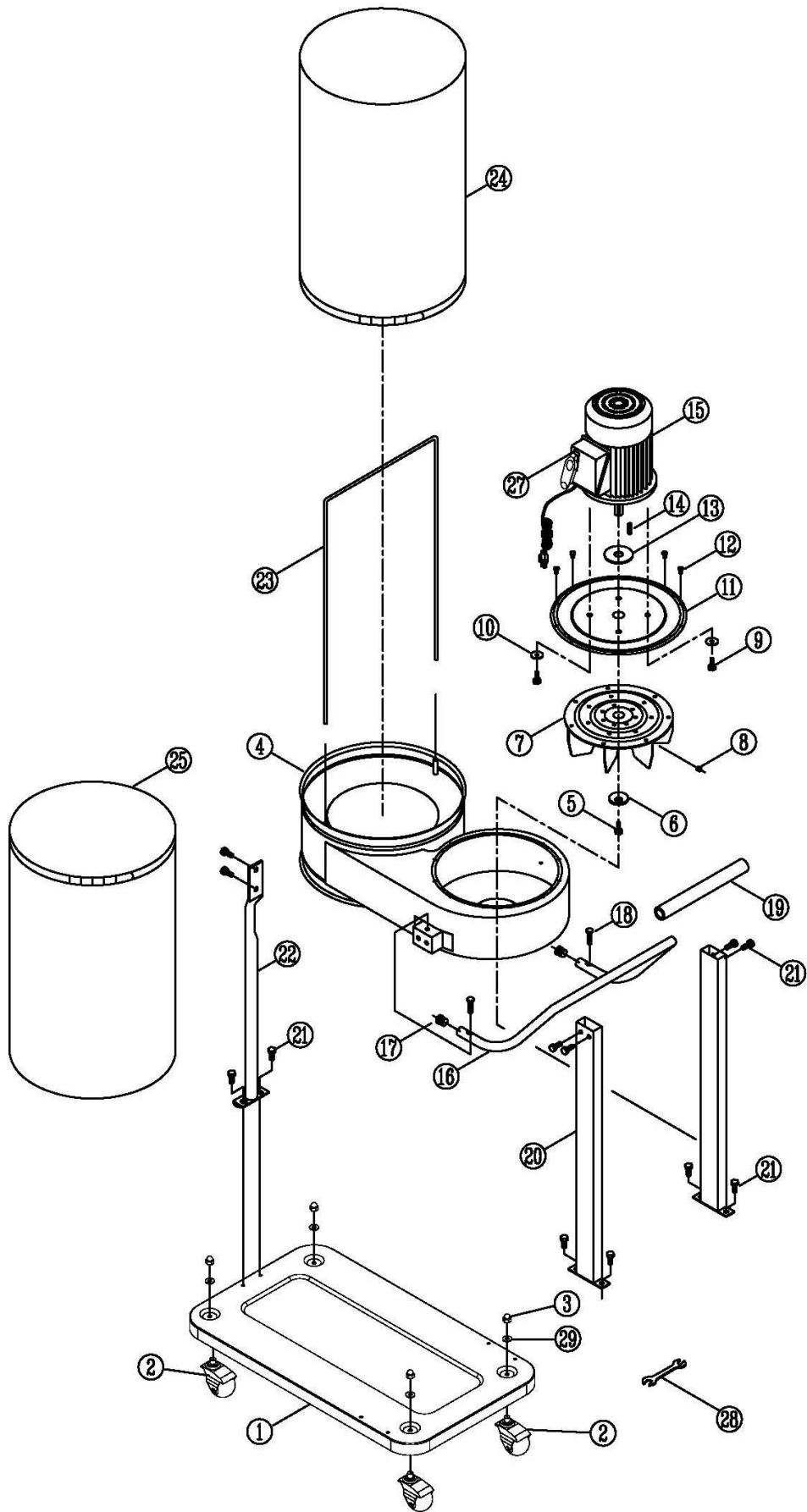
environmentally compatible recycling facility.

Your local refuse amenity will have a separate collection area for EEE goods

# Charnwood W796 Parts List

Part No.	Description	Quantity
01	Base	1
02	Caster 5/16"	4
03	Domed Nut 5/16"	4
04	Collector Body	1
05	Hex. Head Screw M6 x 20mm	1
06	Impellor Washer	1
07	Impellor 228mm Diameter	1
08	Hex. Head Screw 5/16" x 5/16"	1
09	Hex. Head Screw 1/4" x 1/2"	4
10	Washer 1/4" x 25	4
11	Inlet Cover	1
12	Hex. Head Screw M5 x 10	12
13	Motor Packing	1
14	Key	1
15	Motor 240v, 750w, 50hz	1
16	Handle	1
17	Handle Cap	2
18	Cross Head Screw 5/16" x 1"	2
19	Sponge	1
20	Support Leg	2
21	Hex. Head Screw 5/16" x 1/2"	12
22	Collector Support	1
23	Filter Bag Support	1
24	Filter Bag (2 micron)	1
25	Collection Bag (Replace with W690PB)	1
26	Power Cord	1
27	On/Off Switch JS-608-F	1
28	Spanner 10-12mm	1
29	Washer 5/16" x 18	4
30	Self-adhesive Foam Roll	2
31	10mm Hose Clamp	2
32	100mm Diameter Hose x 2.5m length	1
CAP	Motor Capacitor 40uf 250Vac	1
STRAP	Quick Action Bag Strap (370mm Diameter)	2

# CHARNWOOD W796 EXPLODED VIEW DIAGRAM



Update October 2022